

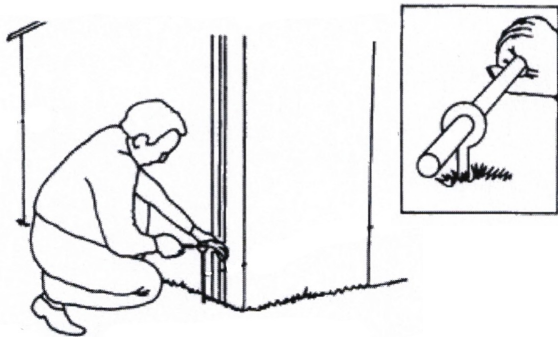
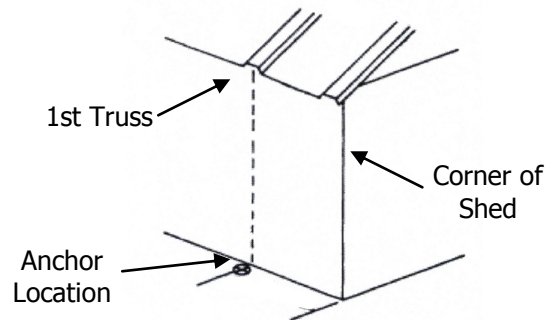
Minute Man Anchors, inc.

General Guidelines for Anchoring Sheds

CAUTION: Determine location of **ALL UNDERGROUND UTILITIES**, (electric, water, sewer, telephone, cable, etc.) to prevent shock or accidental punctures.

Step 1

- After the shed has been set and leveled, determine anchor locations by lining up anchors with the first truss in the roof panel at each corner.
- When additional anchors are required, always run cables along trusses.

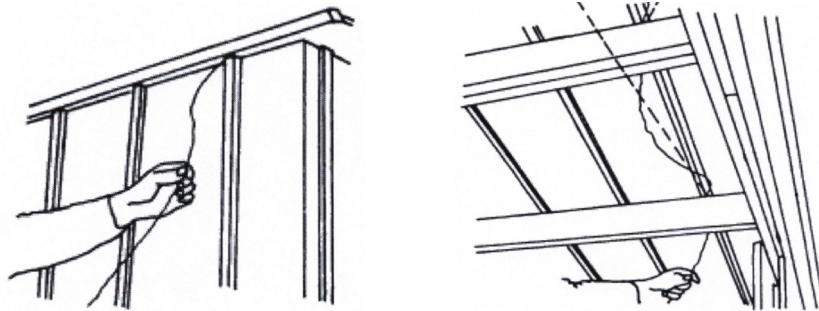


Step 2

Install anchors by first digging a small pilot hole close to the edge of the shed and inserting the disk of the anchor into the hole. Insert a large screw driver, short pipe or rod into the eye of the anchor. Push down and turn (screw) the anchor into the earth so that 3" extend above ground level.

Step 3

Take one end of the cable and insert under roof panel at rib and run over side wall beam and roof beams as shown. Run cable completely through opposite side wall and down to opposite anchor.

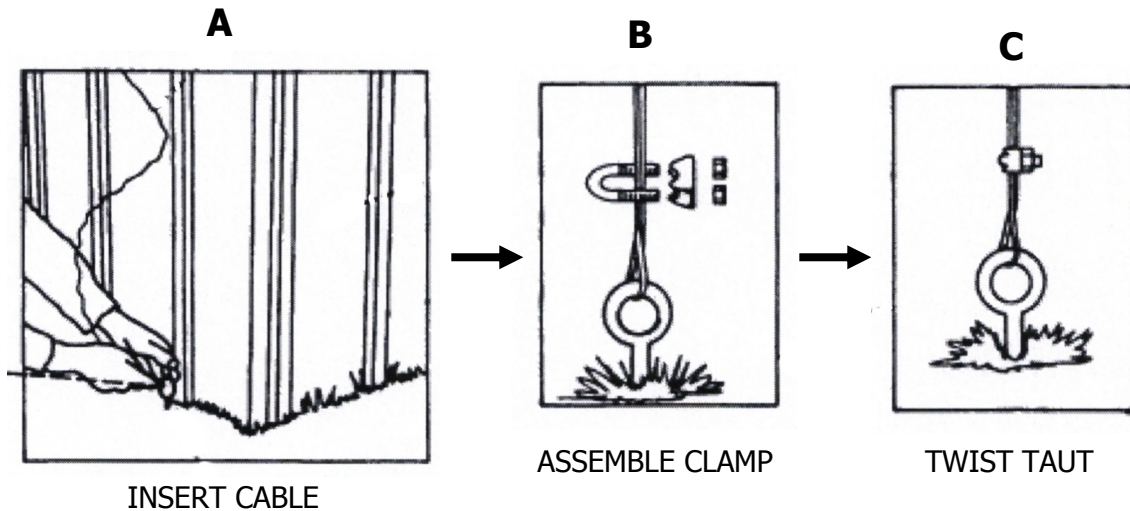


Minute Man Anchors, inc.

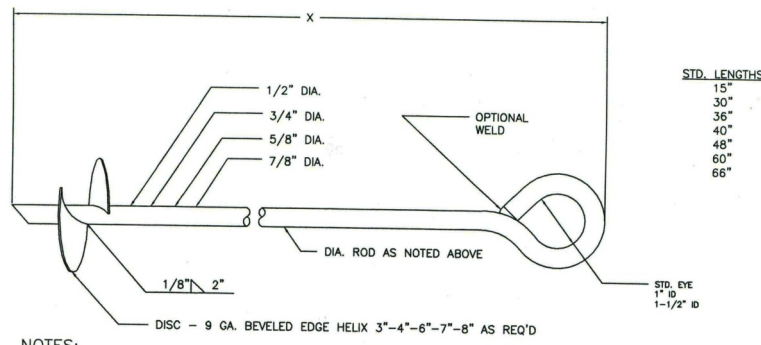
Step 4

- Insert 4" to 6" of cable through eye of anchor, assemble cable clamps as shown.
- Repeat step A at each anchor. Cut off cable leaving 4" to 6" of cable. Assemble cable clamp as shown.
- After cables are secured with clamps, twist anchors again to tighten cable. Do not over tighten, only enough to make the cable taut.

NOTE: In areas exposed to heavy frost, periodic inspection of the anchoring cables for tautness is recommended. If cables become loose, turn anchors clockwise, if too tight, turn counter clockwise.



Choosing the Right Anchor



- One size anchor does not fit all soil conditions. Be sure to use the proper sized anchor for the soil conditions at your location. Generally, shorter anchors with small disks can be used in dense or stiff soils and longer anchors with large disks are required for soft, loose, sandy soils.
- In areas requiring anchorage to 90 mph wind load standards or codes, a minimum 30" anchor with a tested holding capacity of at least 3,000 lbs. is required.
- Shed Manufacturers may have specific anchoring instructions not addressed in these guidelines. Please refer to the manufacturers manual for more detailed instructions.**



Minute Man Products, Inc - 305 West King Street - East Flat Rock, NC 28726
 Phone - (800) 438-7277 Web - www.minutemanproducts.com
 Email - onfo@minutemanproducts.com

