



**RADCO, A
Twining Company**
3220 E. 59th Street
Long Beach, CA 90805

Tel: (562) 272-7231

Fax: (562) 529-7513

LISTING #1350

LISTING & TESTING DIVISION

PRODUCT: MANUFACTURED HOUSING SUPPORT PIERS

MANUFACTURER: **Minute Man Anchors, Inc.**
305 W. King St.
East Flat Rock, NC 28726

Issued: Jan. 2014
Reissued: Jan 2019

PLANT LOCATION: 305 W. King St.
East Flat Rock, NC 28726

Subject to Renewal:
Jan 2020

APPLICATION: HUD Code Manufactured Homes & Modular Structures

1. INTRODUCTION

At the request of Minute Man Anchors, Inc., RADCO has examined steel piers designed to provide support for HUD Code Manufactured Homes and Modular Structures.

2. DESCRIPTION

The standard steel piers have adjustments for placement under the longitudinal I-beams of the manufactured (mobile) home or modular structure and range in vertical height from 8 to 30 inches, in 2 inch increments. Steel Piers with vertical height between 22 and 30 inches are reinforced with four (4) 14 Gauge (44in) x 1 1/4" wide steel straps with the upper edge of the strap located a minimum 11 inches from the top of the pier head. The piers have four legs constructed of 1-inch wide 90 degree angle steel with an average thickness of 0.13 inches. All piers have a rated working load of 6000 pounds, which is based on a minimum ultimate load of 18,000 pounds. The legs are connected to steel base plate strips. All components of the pier are to be welded, with the exception of the adjustable pier head. Steel conforms to ASTM A-36.

3. INSTALLATION

The application of standard piers is for use on manufactured (mobile) homes and modular structures. The system shall be installed in accordance with the manufacturer's installation instructions and the requirements of this listing.

4. EVIDENCE SUBMITTED

- a) Structural test reports and design drawings and specifications were submitted to substantiate the load carrying capacity of the product and are on file with RADCO.
- b) The quality and process control used in the manufacturing and assembly of the product have been submitted to, reviewed, and are on file with RADCO.
- c) RADCO's audit inspection program for standard piers is to assure that the product is manufactured from the specified material and in conformance to RADCO's listing and the approved quality control manual.

5. RECOMMENDATIONS

RADCO recommends that Minute Man Anchors, Inc. standard steel piers be accepted for use in manufactured (mobile) homes and modular structures provided that:

- 1. The product is manufactured at the facility referenced in this listing.

2. Quality control of the product is maintained by the manufacturer.

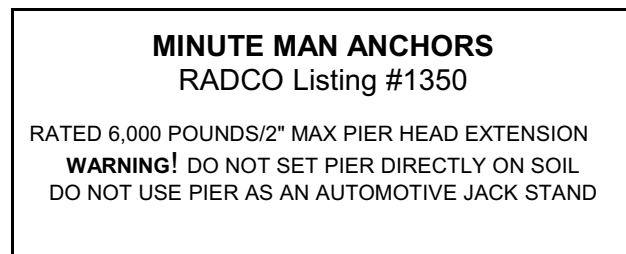
3. The audit system by RADCO is maintained.

4. Each standard pier will be marked with a label, a sample of which is shown in figure 1. The label denotes the RADCO name, and Listing #1350.

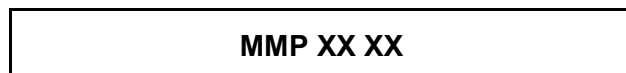
6. APPROVAL

This listing is subject to approval on an annual basis by RADCO

Figure 1: Sample Label



Pier Bottom Stamp



*The first set of X's will represent the pier height and the second set of X's will represent the date of manufacture